

**TATA STEEL**



# **Colorcoat Prisma®**

Inspire your imagination



# Performance

## Galvalloy®

Colorcoat Prisma® uses the unique and proven Galvalloy® metallic coating by Tata Steel. Galvalloy® is made with a special mix of 95% Zinc (Zn) and 5% Aluminium (Al) that conforms to EN 10346:2009. The carefully developed proportions of Zinc and Aluminium in Galvalloy® offers a combination of increased barrier and sacrificial protection when compared with conventional Hot Dip Galv (HDG) coatings and provides unrivalled corrosion protection, even at the cut edges.

## Typical properties

Colorcoat Prisma®		Test standard	
Nominal organic coating thickness	(µm)*	50	EN 13523-1
Specular gloss (60°): Non-matt colours Matt colours	(%) (%)	30–40 <5	EN 13523-2 EN 13523-2
Scratch resistance: Non-matt colours Matt colours	(g) (g)	>3500 >3000	EN 13523-12 EN 13523-12
Abrasion resistance: (Taber, 250 rev, 1kg) Non-matt colours Matt colours	(mg) (mg)	<20 <25	EN 13523-16 EN 13523-16
Flexibility: Minimum bend radius Reverse impact Adhesion (cross hatch) Pencil hardness	(T) (J) (%)	0.5T@16°C ≥18 100 H	EN 13523-7 EN 13523-5 EN 13523-6 EN 13523-4
Maximum continuous operating temperature	(°C)	90	
Corrosion resistance: Salt spray Humidity	(h) (h)	1000 1000	EN 13523-8 EN 13523-26
Corrosion resistance category		RC5	EN 10169:2010
UV resistance category		Ruv4	EN 10169:2010

\*µm = micron

### Notes

1. The figures contained in this table are typical properties and do not constitute a specification. Tested in accordance with EN 13523. For details on test methods visit [www.colorcoat-online.com](http://www.colorcoat-online.com)
2. For health and safety datasheets contact the Colorcoat Connection® helpline on +44 (0)1244 892434.

## Fire performance

### Reaction to fire

Colorcoat Prisma® is classified in accordance with EN 13501-1:2002 as Class A1.

### Resistance to fire

For products covered by EN 14782:2005 Colorcoat Prisma® is deemed to satisfy, without the need for further testing, the requirements for external fire performance of roof covering product in accordance with Commission Decision 2000/553/EC.

## Water harvesting

Colorcoat Prisma® has passed the stringent BS6920: 2000 test *“Suitability of non-metallic products for use in contact with water intended for human consumption with regard to the effect on the quality of water.”* The testing has confirmed that when in contact with Colorcoat Prisma®, the cold water odour and flavour, appearance, cytotoxicity, growth of aquatic micro-organisms and metal extraction is not adversely affected and within the safe guidelines as dictated by the BS standard. Colorcoat Prisma® is registered with the Water Regulatory Advisory Scheme (WRAS) for cold water use so can be used as part of a rainwater collection system as it does not adversely affect the quality of the wholesome water supply.

# Peace of mind guaranteed

## Confidex® Guarantee

Confidex® is the product performance guarantee for Colorcoat Prisma®, when used in an external conventional building envelope application namely roof and wall cladding using single skin, built-up or composite panel construction in industrial and commercial buildings.

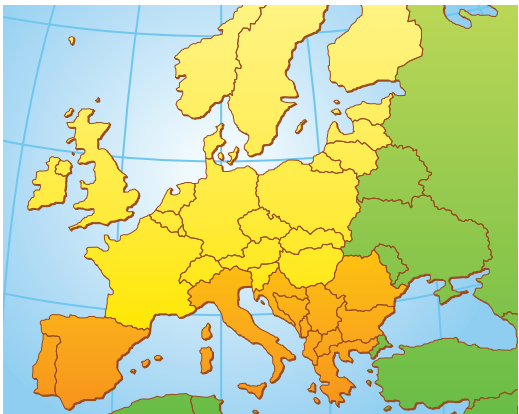
Confidex® offers the longest and most comprehensive guarantee for pre-finished steel available in Europe with Colorcoat Prisma® being guaranteed for up to 30 years.

The Confidex® Guarantee is project specific and upon registration provides a contractual relationship between Tata Steel and the building owner meaning that in the case of a claim the contact with Tata Steel is direct rather than having to go through the supply chain, saving time and money. What's more this is transferable should the building owner change by simply filling in the form on the back of the guarantee certificate.

### Who registers?

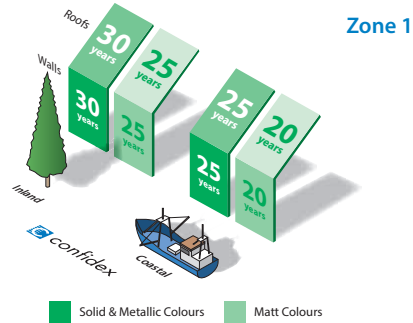
Usually the cladding contractor or the cladding system manufacturer, but anyone in the supply chain can apply online at: [www.colorcoat-online.com/registration](http://www.colorcoat-online.com/registration)

If you want to check if your building has been registered contact the Colorcoat Connection® helpline on +44 (0) 1244 892434.



Yellow Northern Europe – Zone 1      Orange Southern Europe – Zone 2  
Green For areas outside of Confidex® zones please contact Tata Steel for more information.

## Confidex® zones



### Notes

- Figures under the Coastal heading are for buildings within 1 km of any coast.
- Full terms and conditions of the Confidex® Guarantee are on the online application form, available at [www.colorcoat-online.com/registration](http://www.colorcoat-online.com/registration)
- Confidex® must be registered within 3 months of the building completion date for the guarantee to be valid.
- The Confidex® Guarantee periods on the diagram above are applicable to Zone 1 and Zone 2. For more information on other zones visit [www.colorcoat-online.com/confidexmap](http://www.colorcoat-online.com/confidexmap)

## British Board of Agrément Certificate

The long-term performance of Colorcoat Prisma® has been recognised within the BBA certificate 91/2717 and relates to the product use as external roofing and cladding or internal lining. *"Colorcoat Prisma® coating and metal treatment will protect the steel substrate against corrosion for a period in excess of 40 years in normal industrial, urban, and rural environments".*



# Sustainability

## Sustainability

At Tata Steel we are committed to making the products society needs and to making them in the most responsible way. Our commitment to sustainability also means we actively manage our impacts and contribution throughout the full life of our products - with our suppliers, within our own operations, through the supply chains we serve and by taking responsibility for recycling steel. Colorcoat Prisma® has achieved BES 6001 responsible sourcing certificate which reinforces our commitment to sustainability.

## Life Cycle Assessment

We constantly strive to ensure that the manufacturing processes and materials used to manufacture Colorcoat Prisma® are the most sustainable available. Moreover, the enhanced robustness and durability of Colorcoat Prisma® mean that it significantly outperforms other pre-finished steel in terms of environmental impacts over the full life cycle.

To demonstrate the environmental impacts, Tata Steel have published an Environmental Product Declaration (EPD) for each of the Colorcoat® assessed cladding systems, based on an initial Life Cycle Analysis. Please visit [www.colorcoat-online.com/sustain](http://www.colorcoat-online.com/sustain) for further details.

## System environmental assessment

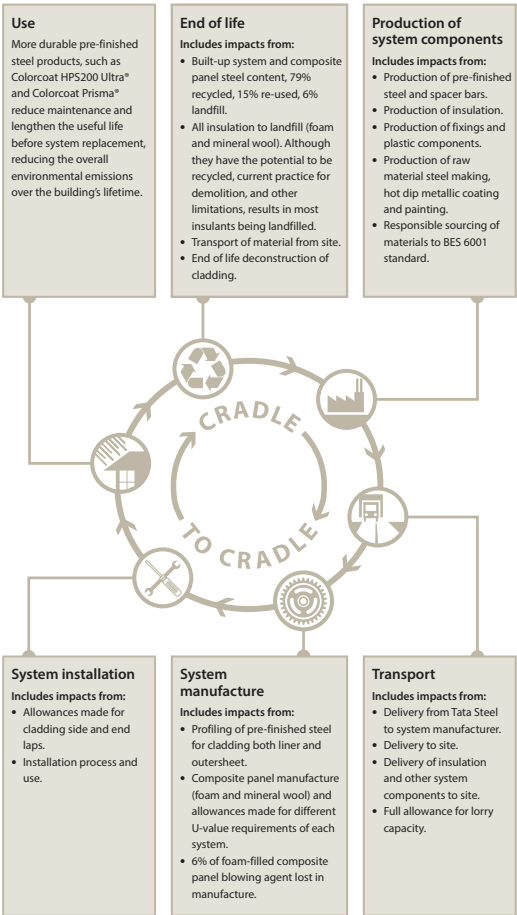
In the UK all roof and wall systems using pre-finished steel achieve a Green Guide A+ rating. Manufacture and processing of Colorcoat Prisma® into building envelope products, through our approved supply chain, can meet the responsible sourcing criteria for BREEAM. Our manufacturing site has an environmental management system which has been certified to ISO 14001.

## Recycling

Colorcoat Prisma® is truly recyclable without any loss of quality, time after time. There is a well established and very efficient steel recycling infrastructure which ensures that all steel collected at end of life goes back into steel manufacture. Through this efficient recycling of steel, the environmental investment in steel-making is never wasted, making steel the most sustainable construction material.

## Confidex Sustain®

Confidex Sustain® is an enhancement of the Confidex® Guarantee. As well as covering the performance of Colorcoat Prisma® used on your building, it offsets the unavoidable CO<sub>2</sub> emitted during production of the whole cladding system, including the insulation and fixings. For a list of assessed cladding systems, to pre-register your projects, or for more information on Confidex Sustain®, please visit [www.colorcoat-online.com/sustain](http://www.colorcoat-online.com/sustain) or call the Colorcoat Connection® helpline on +44 (0)1244 892434.



# Additional features

- Ideal when used in integrated renewable energy generation systems. Colorcoat Prisma® is proven to provide superior solar-thermal absorption capability and excellent durability when used as a collector for active solar air heating solutions such as Colorcoat Renew SC® by Tata Steel.
- Colorcoat Prisma® is provided with a high performance backing coat as standard, but is also available double sided in limited colours for buildings with demanding internal environments or for applications such as rainscreens and rainwater goods. For availability of colour combinations please contact the Colorcoat Connection® helpline on +44 (0)1244 892434.

## Specification

To secure the peace of mind that comes from a rigorously manufactured and world wide tested product from Tata Steel, please ensure Colorcoat® as well as the individual product name is specified: Colorcoat Prisma® by Tata Steel with Galvalloy® metallic coating.

## Colorcoat® services

The Colorcoat® brand is recognised as the exclusive mark of quality and metal envelope expertise and is supported by a comprehensive range of services, technical advice and guidance.

### Colorcoat® Technical Support Team

If you are building to specific sustainability credentials or performance criteria, our dedicated team can offer you truly objective advice on a range of metal building envelope systems to ensure you get the right solution for your building. Call the Colorcoat Connection® helpline to request a visit from your regional representative.

### Colorcoat Connection® helpline

This dedicated helpline offers immediate and easily accessible advice and guidance on a wide range of building issues. Contact us on +44 (0)1244 892434.

### Colorcoat® Technical Papers

We have produced a number of technical papers that can help you address key issues in building design and construction.

### Colorcoat® Supply Chain Partners

Colorcoat® products are available through our market leading supply chain partners, who have CE marked and SCI assessed systems that we recommend for the very highest quality and service.

### Colorcoat® Accredited Distributors

Our Colorcoat® Accredited Distributors can provide you with any colour from the Colorcoat Prisma® range in small quantities, with a 48 hour service guaranteed.

# Colour availability

A range of the most popular colours are available on short production lead times, and all colours are available from our Colorcoat® Accredited Distributors in standard sizes. To check the quickest colour availability for your project contact us on the Colorcoat Connection® helpline on +44 (0) 1244 892434.

## Repertoire®

As an additional service, whether you want your building to stand out, or blend with the surroundings, we can create a unique identity for your building. Through our Repertoire® Colour Consultancy service we can match almost any solid colour for walls or roofs of your building, with a minimum order quantity of 2500m<sup>2</sup>, we can work from either physical swatches or reference standards.

## Metal hand samples

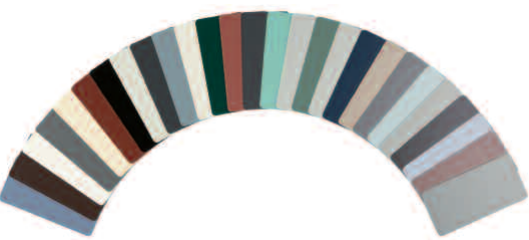
Metal hand samples are available for all colours. For a truer representation of colour and effect, please obtain metal hand samples from the Colorcoat Connection® helpline or online at [www.colorcoat-online.com/samples](http://www.colorcoat-online.com/samples)

## Colour consistency

If tonal consistency is critical, all cladding for a single elevation should come from the same production batch. All metallic shades exhibit a degree of directionality.

## Matching components

If accessories made from other materials are to be colour-matched to the roof or wall cladding, the best reference is the actual profiles or panels delivered to site, or material from the same batch.



## BS & RAL reference table

Colour	BS	RAL
Athena		*
Pegasus		*
Aquarius		*
Atlantis		*
Kronos		*
Sirius		*
Orion		*
Zeus		*
Ephyra		*
Helios		*
Silver Metallic		9006
Grey Aluminium		9007
Denim		5014
Clover		6005
Hamlet		9002
Cream		1015
Oxide Red		3009
Chocolate Brown	06C40	8017
Black	00E53	9005
White	00E55	9010
Oyster		7035
Alaska Grey		7000
Slate Grey		7012
Anthracite		7016
Terracotta Matt	04C39	040 40 40
Copprum Matt		160 70 20
Anthracite Matt		7016

**RAL references**  
4 digit numbers are RAL Classic references.  
7 digit numbers are RAL Design references.  
British Standard or RAL reference numbers shown in the table, represent the nearest colours and are not exact matches to Colorcoat Prisma®.  
\* These colours do not have equivalent BS/RAL references.

For further details visit:  
[www.colorcoat-online.com](http://www.colorcoat-online.com) or ring  
the Colorcoat Connection® helpline on  
**+44 (0) 1244 892434**

# Colorcoat Prisma®

## Introduction

Confidex® guaranteed for up to 30 years Colorcoat Prisma® is backed by even more testing and real world data to combine outstanding aesthetics with long lasting performance.

Following consultations with architects and our supply chain, we have developed a contemporary colour palette for Colorcoat Prisma® which includes solids, metallics and natural matt shades.

## Product benefits

- Contemporary colour range with an optically smooth finish for modern designs.
- All colours surpass requirements of Ruv4 and RC5 as per EN 10169:2010 proving outstanding colour retention and corrosion resistance.
- Optimised Galvalloy® metallic coating for ultimate corrosion resistance and cut edge protection.
- Confidex® Guarantee for up to 30 years for the weatherside of industrial and commercial buildings with no inspection or maintenance to maintain its validity.
- Reverse side branding making traceability easy, so you can rest assured that your building is protected with the highest quality from Tata Steel.
- Available with Confidex Sustain® to offer the world's first CabonNeutral® building envelope.
- Standard sizes are available on short production lead times.
- Robust and durable topcoat for easier handling and processing.

## Special metallics



Athena



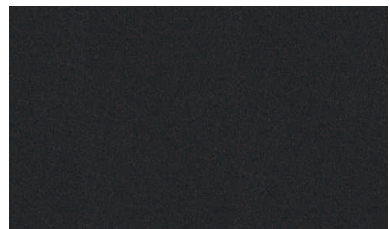
Pegasus



Aquarius



Atlantis



Kronos





Sirius



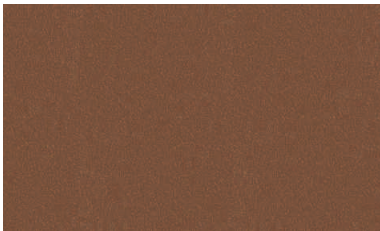
Orion



Zeus



Ephyra



Helios

## Solid metallics

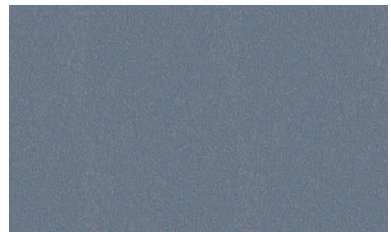


Silver Metallic (RAL 9006)

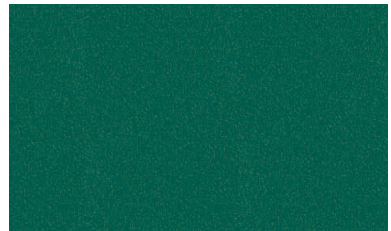


Grey Aluminium (RAL 9007)

## Solid colours



Denim (RAL 5014)

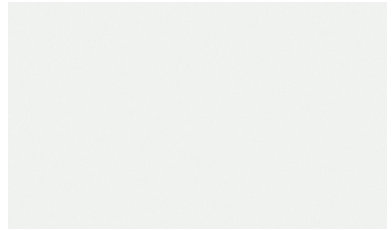


Clover (RAL 6005)

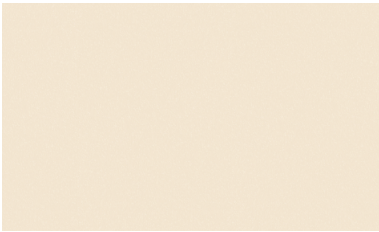




Hamlet (RAL 9002)



White (RAL 9010)



Cream (RAL 1015)



Oyster (RAL 7035)



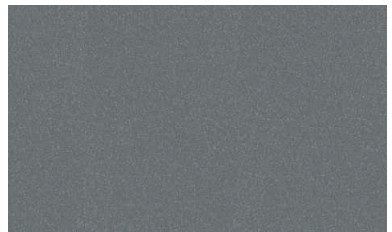
Oxide Red (RAL 3009)



Alaska Grey (RAL 7000)



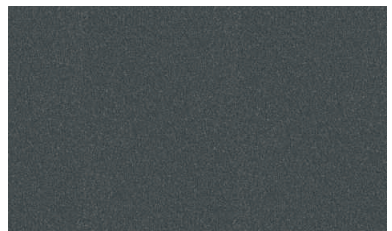
Chocolate Brown (RAL 8017)



Slate Grey (RAL 7012)

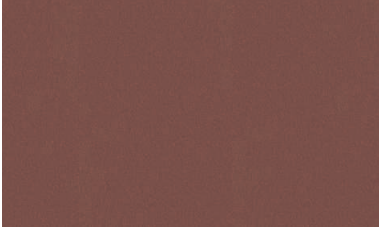


Black (RAL 9005)



Anthracite (RAL 7016)

## Matt colours



Terracotta (RAL 040 40 40)



Copprium (RAL 160 70 20)



Anthracite (RAL 7016)

## Aesthetics that last

Designed to withstand the rigours of the external environment, versatile, lightweight and strong, Colorcoat Prisma® pre-finished steel is the ideal choice for your building envelope for contemporary, long lasting colour.

Whatever your type of building from warehouses to offices, or schools to houses, Colorcoat Prisma® offers you a range of attributes that enables you to create beautiful, modern and durable roofs and walls, Confidex® guaranteed for up to 30 years.



For further details visit:  
[www.colorcoat-online.com](http://www.colorcoat-online.com) or ring  
the Colorcoat Connection® helpline on  
**+44 (0) 1244 892434**

[www.colorcoat-online.com](http://www.colorcoat-online.com)

#### **Trademarks of Tata Steel UK Limited**

Aquarius, Atlantis, Colorcoat, Colorcoat Connection, Colorcoat HPS200 Ultra, Colorcoat Prisma, Colorcoat Renew SC, Confidex, Confidex Sustain, Copprum, Galvalloy, Hamlet, Helios, Kronos, Orion, Pegasus, Repertoire, Sirius and Zeus are trademarks of Tata Steel UK Limited.

CarbonNeutral is a registered trademark of the CarbonNeutral Company.

Care has been taken to ensure that the contents of this publication are accurate, but Tata Steel Europe Limited and its subsidiaries, (including Tata Steel UK Limited), do not accept responsibility or liability for errors or information that is found to be misleading. Suggestions for, or descriptions of, the end use or application of products or methods of working are for information only and Tata Steel Europe Limited and its subsidiaries accept no liability in respect thereof.

Before using products or services supplied or manufactured by Tata Steel Europe Limited and its subsidiaries, customers should satisfy themselves as to their suitability.

Printed with biodegradable vegetable inks on material sourced from responsible managed forests, certified in accordance with the FSC. Contains 10% recovered fibre, diverting waste from landfill.

#### **Sales Contact Details**

##### **Tata Steel**

Shotton Works, Deeside,

Flintshire CH5 2NH

United Kingdom

T: +44 (0) 1244 812345

[www.colorcoat-online.com](http://www.colorcoat-online.com)

##### **Colorcoat Connection® helpline**

T: +44 (0) 1244 892434

E: [colorcoat.connection@tatasteel.com](mailto:colorcoat.connection@tatasteel.com)

Copyright 2013 Tata Steel, Registered Office: 30 Millbank,  
London SW1P 4WY, Registered in England No. 2280000

Language English UK 0313