

ARKzip verge installation

49-d-ARK-Tech-03/2017

p 1 of 4

ARKzip verge detail:

These verge design and installation guidelines are for ARKzip standing seam profiles only.

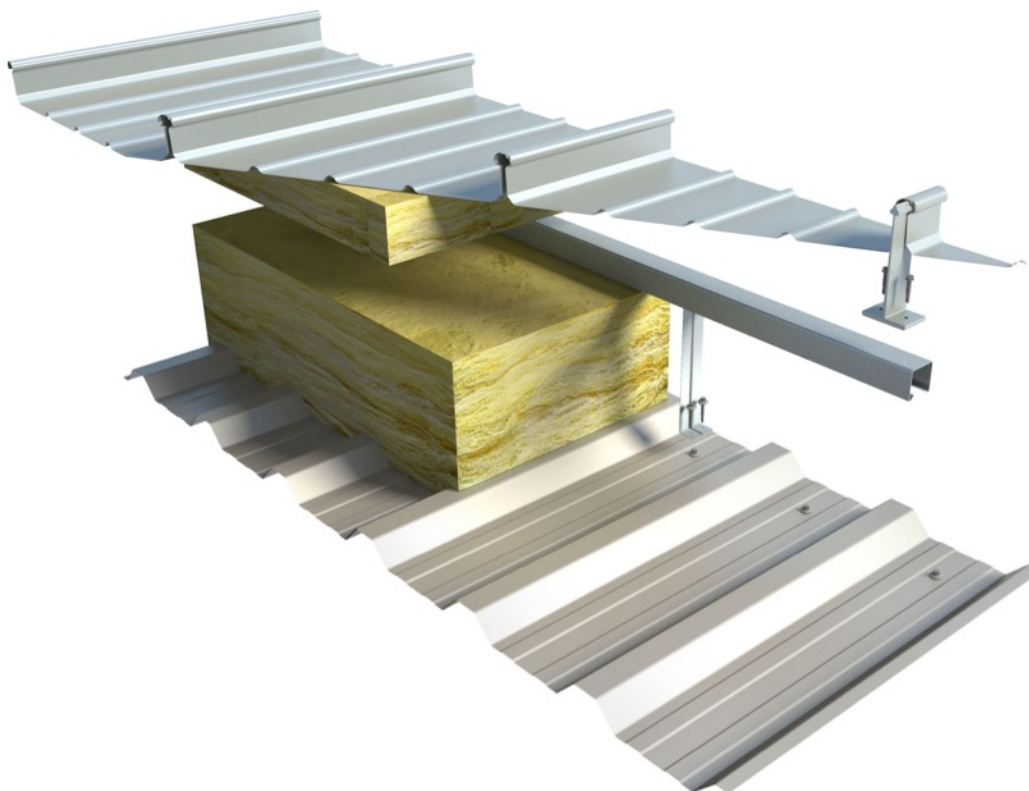
ARK supplied components must be used.

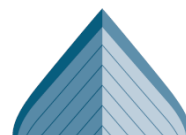
The verge construction is critical to securing the roof sheets at the most vulnerable part of a building in terms of wind uplift—the verge. The detail has to secure the roof sheet, allow thermal movement to occur, be weatherproof and provide a secure anchorage ground for the verge flashing.

The primary components are formed from extruded EN 755-9 6060 T6 aluminium.

Refer also to data sheets 32-a-ARK-Tech-03/2015 “Minimum requirements for ARKzip standing seam roofing”, 54-a-ARK-Tech-08/2015 “AL flashings and thermal movement” and the “ARKzip Fixing and Handling Guide”

Typical ARKzip liner build up:



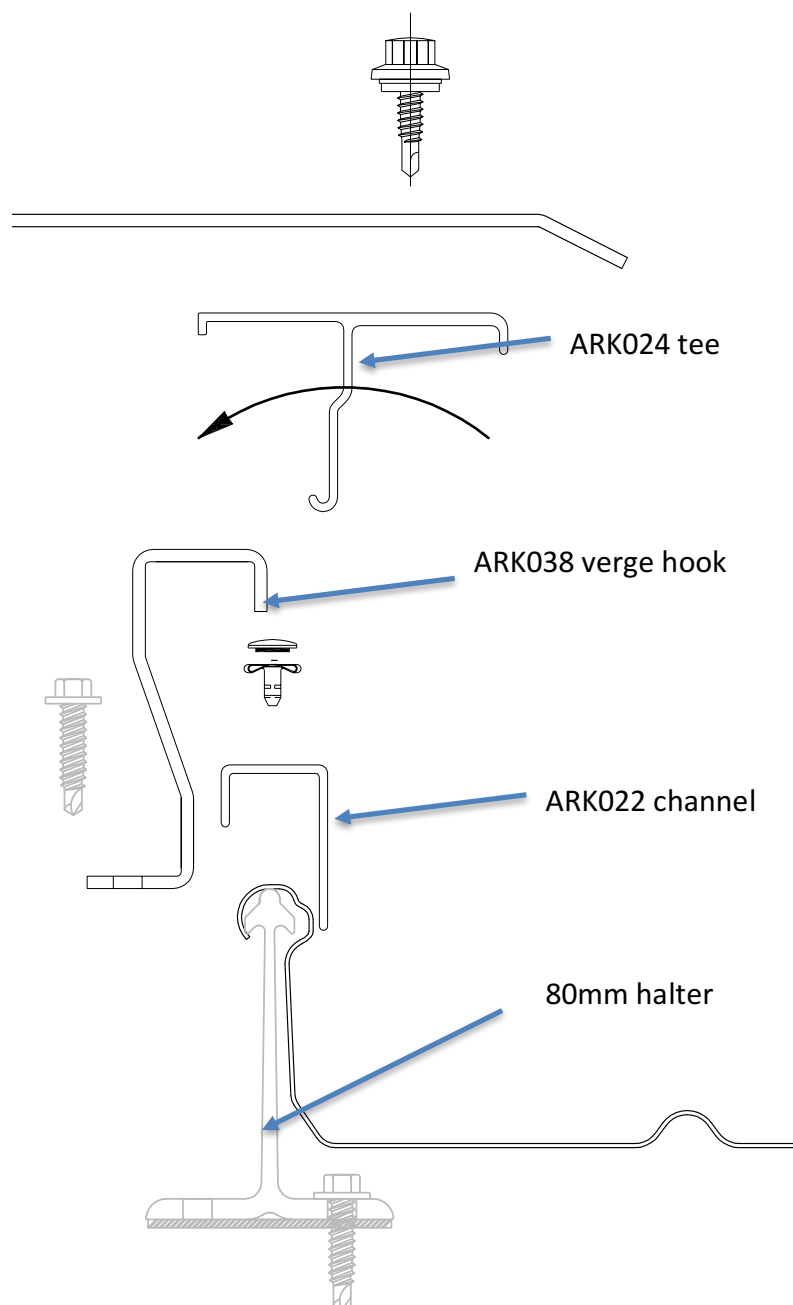


ARKzip verge installation

49-d-ARK-Tech-03/2017

p 2 of 4

Verge detail – 80mm (standard) halter:



ARKzip verge installation

49-d-ARK-Tech-03/2017

p 3 of 4

1. The detail allows the verge flashing to be secured independent of the roof sheet with the roof sheet able to undergo thermal movement independent of the verge flashing.
2. The verge channel is fixed to the ARKzip sheet rib using aluminium rivets at nominal 500mm centres. Rivets must be >100mm away from a halter.
3. The external flashing fixings should be stainless steel screws or aluminium rivets.
4. Aluminium flashings must allow thermal movement. Position laps and butt straps of aluminium flashings to coincide with joints in lengths of ridge and verge extrusions.
5. Extrusions are able to move with temperature. Flashings are dead fixed to the verge tee. Where aluminium flashings are fixed to rigid supports (walls etc) use one dead fix and slotted holes for the remainder.
6. Ensure that flashing junctions occur over extrusions junctions and that butt straps are fixed to one side only. At lap joints, do not fix through the lap.
7. Allow 10mm gaps between AL sections
1. For pre-curved roof sheets ask for curved verge components -
 - For curved roofs < 50m radius, order the verge tee to be slotted for curving.
 - For radii < 15m order the verge channel to be pre curved as well.
8. Verge flashings lap or butt strap joints and fasteners must allow expansion to occur, gap size 10mm at butt straps.
9. Robustly seal the liner (and/or vcl) to the wall construction as the vapour seal and air barrier.
10. Ensure that the insulation fills the flashing detail and is dry.

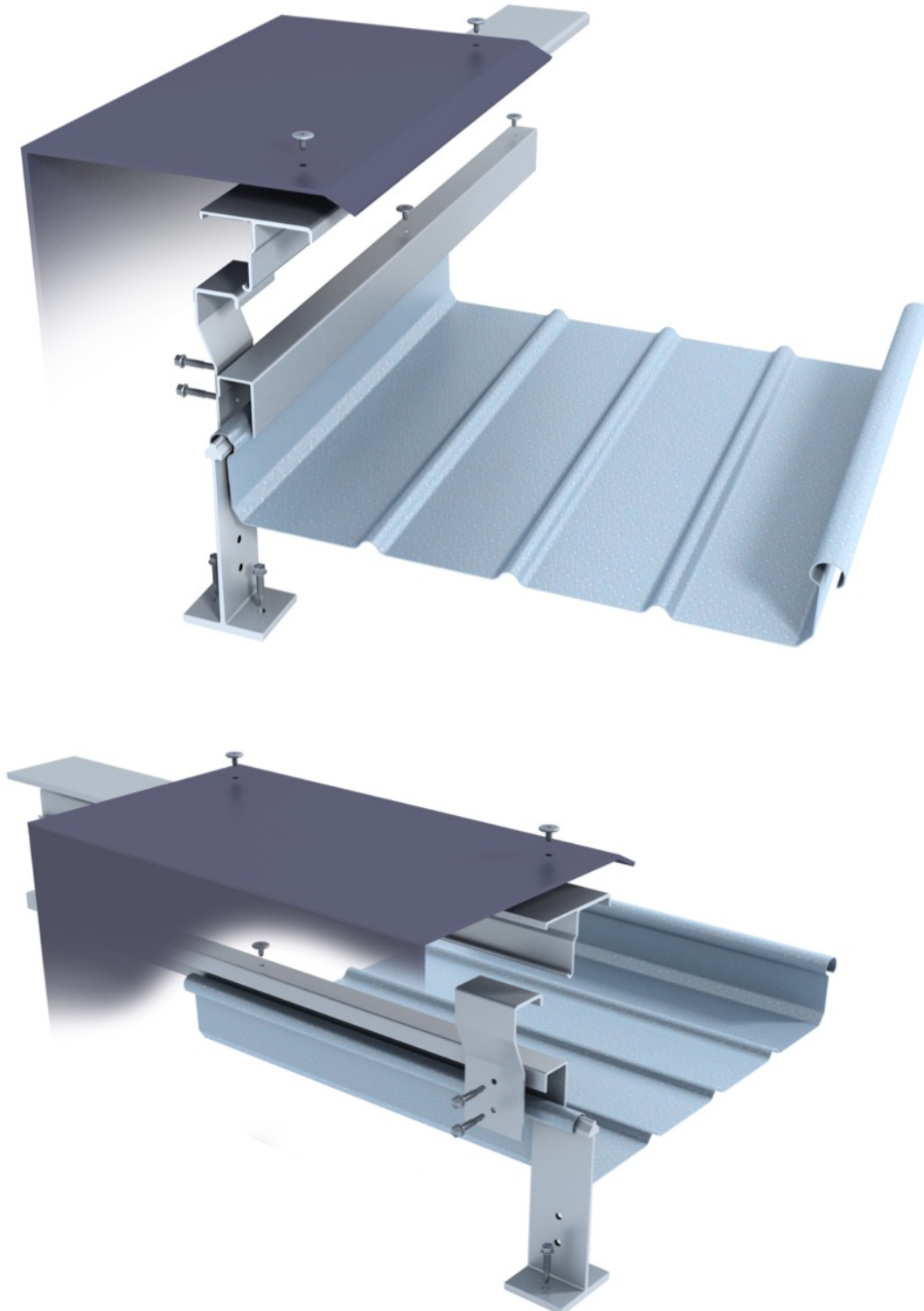


ARKzip verge installation

49-d-ARK-Tech-03/2017

p 4 of 4

Verge detail (– Shows a 140mm halter, check availability before choosing 140mm halters):



© ARK Profiles Limited 2015 The information contained within this document is correct at the time of publication but ARK Profiles (The Company) does not accept liability for errors or information found to be misleading. The Company reserves the right to change product details and specifications without prior notice. A customer must satisfy itself that the Company's products are suitable for the customer's needs. The Company undertakes business solely on it's terms and conditions.

