

ARKzip ridge installation

50-d-ARK-Tech-03/2017

p 1 of 5

ARKzip ridge detail:

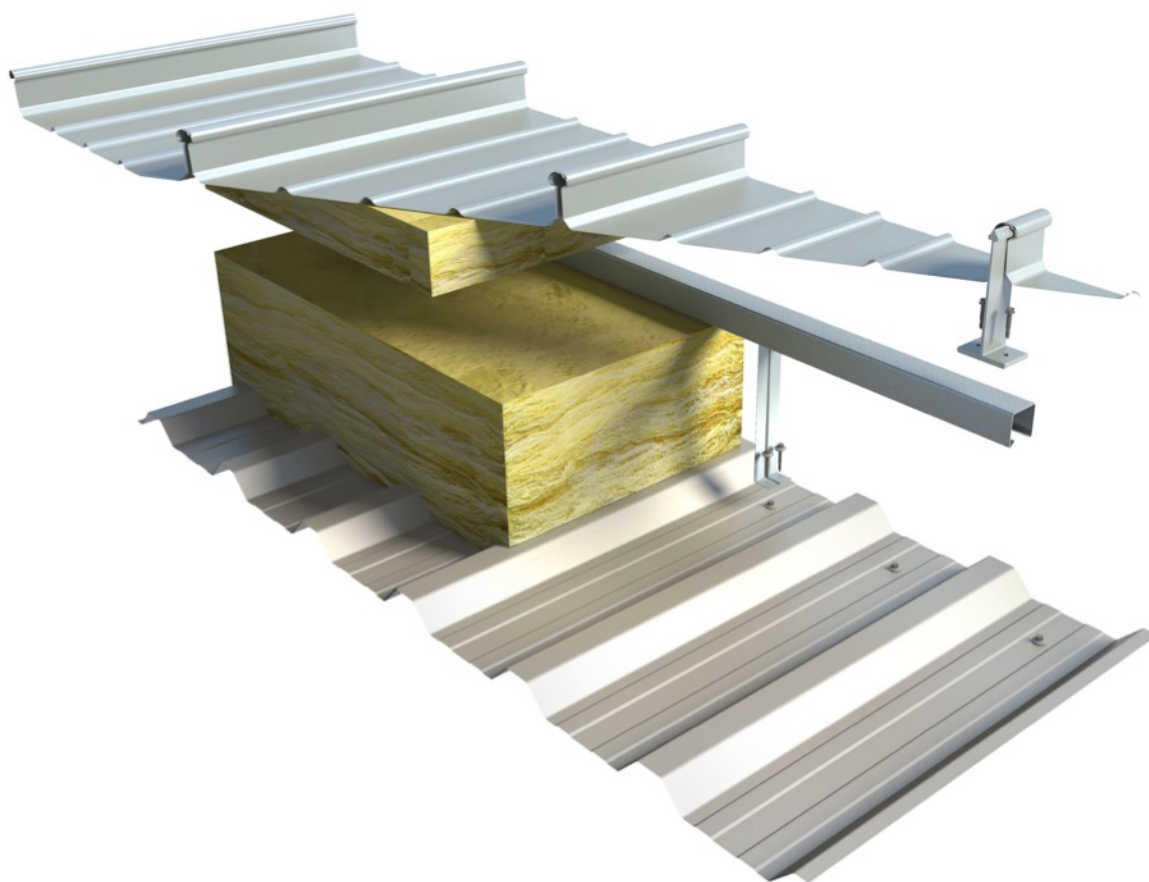
These ridge design and installation guidelines are for ARKzip standing seam profiles only.

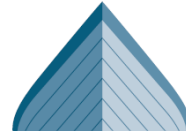
ARK supplied components must be used

The primary components are formed from extruded EN 755-9 6060 T6 aluminium.

Refer also to data sheets 32-a-ARK-Tech-03/2015 “Minimum requirements for ARKzip standing seam roofing”, 54-a-ARK-Tech-08/2015 “AL flashings and thermal movement” and the “ARKzip Fixing and Handling Guide”

Typical ARKzip liner build up:



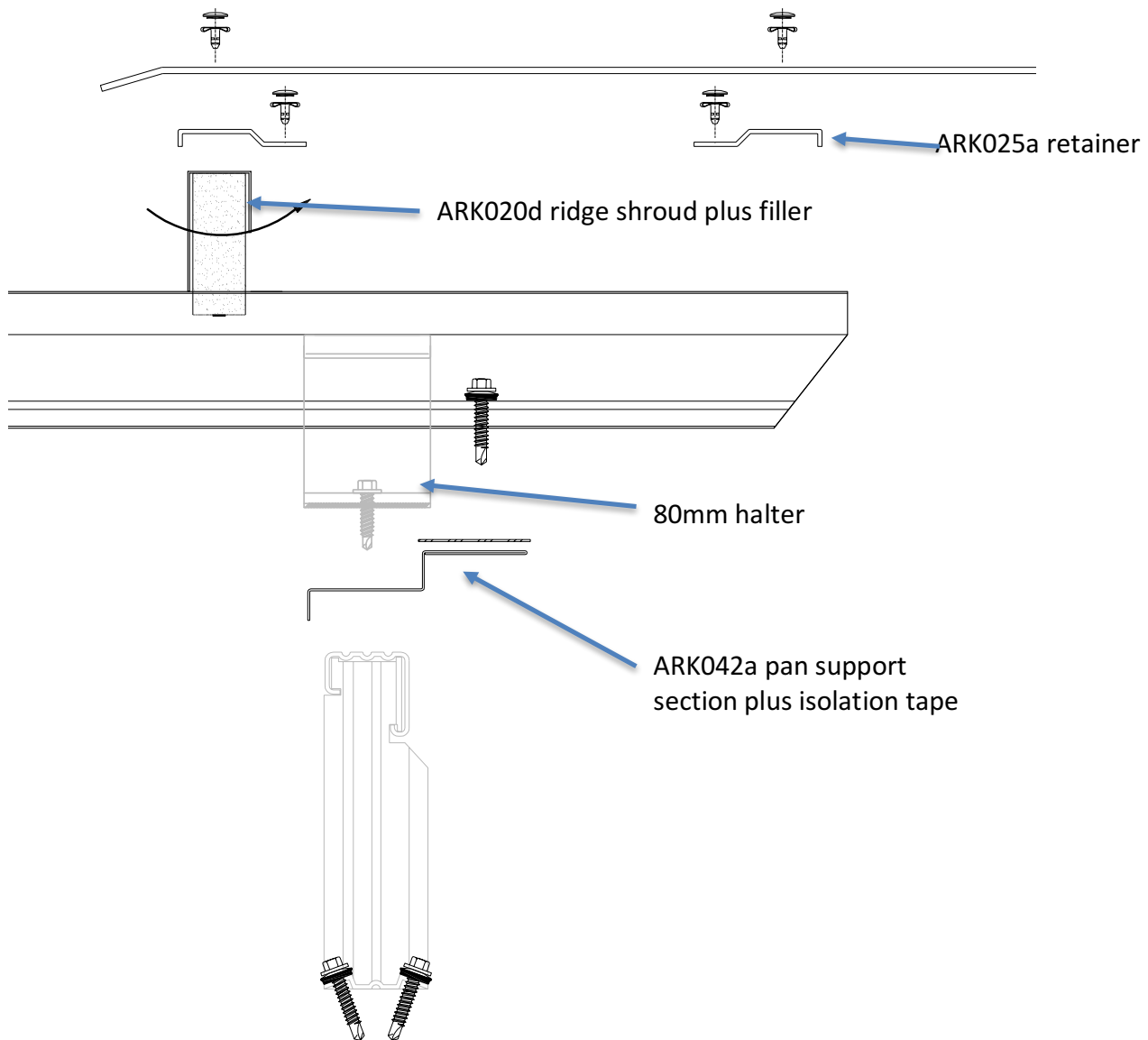


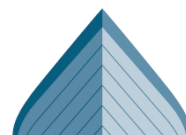
ARKzip ridge installation

50-d-ARK-Tech-03/2017

p 2 of 5

Ridge detail – 80mm (standard) halter:



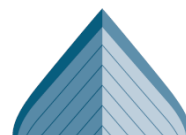


ARKzip ridge installation

50-d-ARK-Tech-03/2017

p 3 of 5

1. Halter to sheet end 125mm – 300mm.
2. The fixed point is located at the ridge spacer. Tie the spacer to the opposite slope spacer or to firm grounds. Install tie to alternate spacer brackets.
3. Install fixed point stainless steel screws plus min 15mm dia sealer washers, min 2No per sheet, locate 50mm each side of ribs. Screws are fixed into the pan support section under the roof sheet to provide a fixed point fixing and to ensure a flat roof sheet for the ridge filler to sit on. Isolate dissimilar metals unless the pan support section is Plastisol.
4. Bend sheets to vertical using a turn-up tool.
5. Set the line for the ridge fillers and shrouds and install the ridge retainers and supports, Bulbrite riveting to each roof sheet rib. Leave a 10mm gap between sections.
6. Install shrouds over the fillers and rotate into place under ridge retainers.
7. Apply sealant behind ridge filler blocks as required
8. Aluminium flashings must allow thermal movement. Position laps and butt straps of aluminium flashings to coincide with butt joints in lengths of ridge extrusions. Ensure that flashing butt straps are fixed to one side only. At lap joints, do not fix through the lap. The sealant has to accommodate movement.
9. Extrusions are able to move with temperature. Fix flashings with dead fix to extrusions. Where aluminium flashings are fixed to rigid supports (walls etc) use one dead fix and slotted holes for the remainder
10. Install the ridge flashing ensuring equally spaced fasteners with 2No rivets/stainless screws into the ridge shroud retainer, per sheet width.
11. The external flashing fixings should be stainless steel screws or aluminium rivets.
12. Robustly seal the liner (and/or vcl) to the ridge liner closer as the vapour seal and air barrier. Bed filler blocks in sealant top and bottom.
13. Ensure that the insulation fills the flashing detail and is dry and continuous over the ridge. Temporarily protect the insulation from rain if the ridge capping is not to be installed immediately.

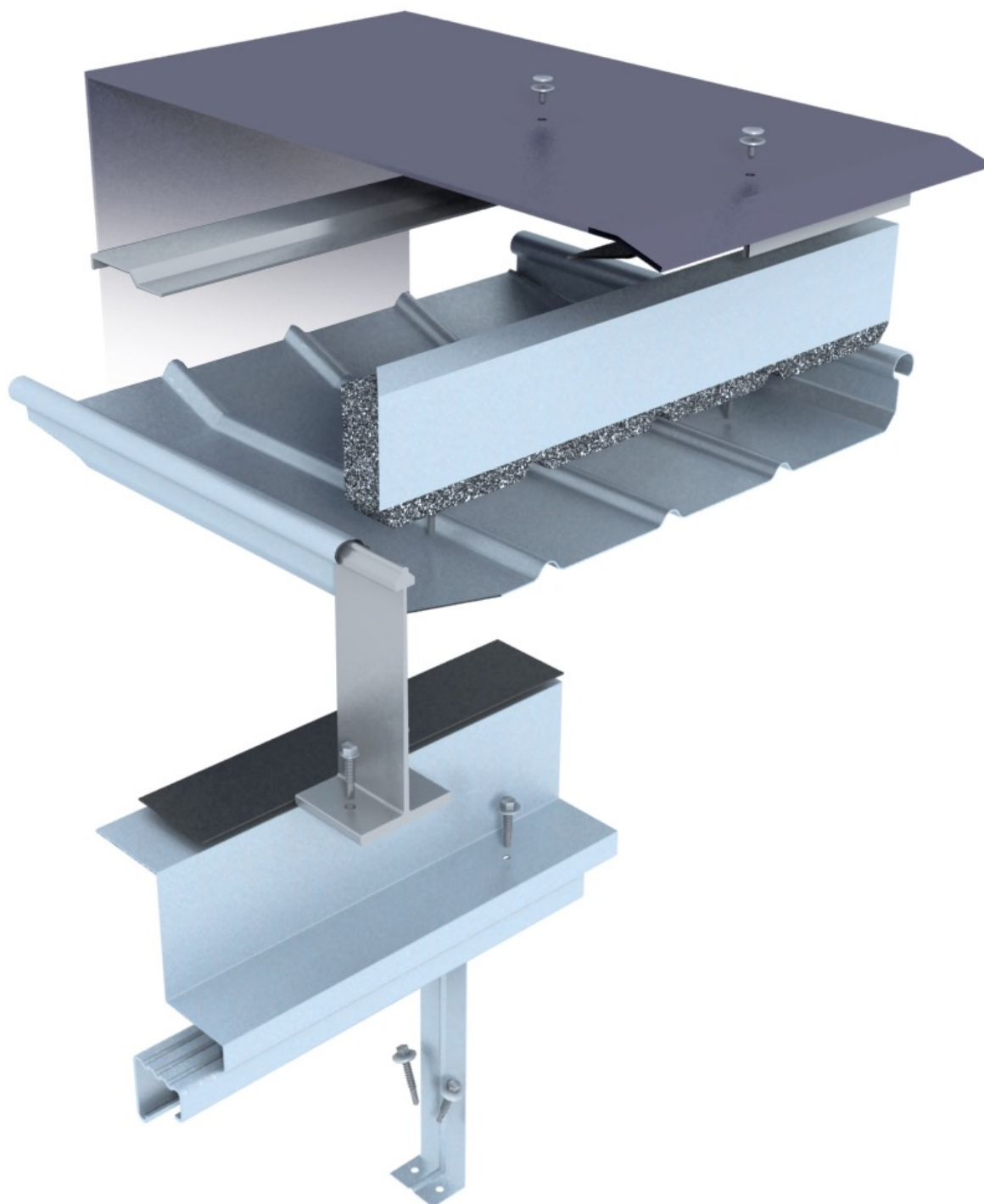


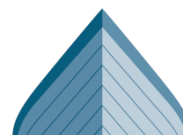
ARKzip ridge installation

50-d-ARK-Tech-03/2017

p 4 of 5

Ridge detail (– Shows a 140mm halter, check availability before choosing 140mm halters):





Ridge detail:

