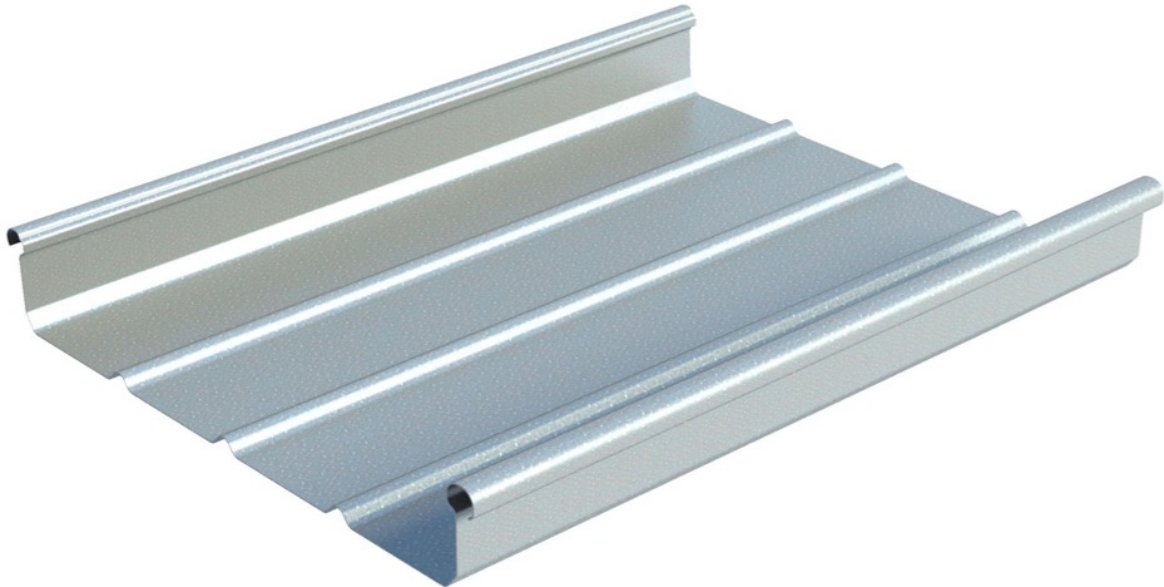


ARKzip 65.400.7.Steel: 55-a-ARK-Prod-06_2016

1 of 2



Profile depth	65mm		Profile width	400mm				
Weight: kg/m ²	7.8kg/m ²		Non Fragility to ACR[M]001:2014	Class B				
Material	0.7mm steel in Tata Colorcoat HPS200 Ultra®/ Tata Colorcoat® LG. Colours as Tata standard range.							
Durability	Paint finish	Life expectancy years (roofing)		Agreement references				
		inland	coastal					
	Tata Colorcoat HPS200 Ultra®	30 - 40	25 – 30 (1km)	2717PS8i1a				
	Tata Colorcoat® LG	15 - 25	10 - 20 (2km)	2717ps3i1a				
	Refer to http://www.colorcoat--online.com for more detail.							
CE references	ARK.DoP.005, 006: BS EN 14782							
Section properties	Thickness	Weight	Rib in compression		Pan in compression		Reaction	Detachment
	t _N mm	kg/m ²	M _{c,Rk,F} (kNm/m)	I _{eff} (cm ⁴ /m)	M _{c,Rk,F} (kNm/m)	I _{eff} (cm ⁴ /m)	R _{w,Rk,B} (kN/m)	(kN/m)
	0.7	7.8	1.89	22.99	1.47	20.06	10.71	3.26

ARKzip 65.400.7.Steel: 55-a-ARK-Prod-06_2016 p 2 of 2										
Structural: positive/gravity loads: variable loads factor 1.5, deflection L/200. Multi spans	Span	1.0m	1.1m	1.2m	1.3m	1.4m	1.5m	1.6m	1.7m	1.8m
	Load: kN/m ²	4.88	4.27	3.77	3.35	3.01	2.71	2.46	2.24	2.06
Structural: negative/uplift loads: variable loads factor 1.5, deflection L/90. Multi spans.	Span	1.0m	1.1m	1.2m	1.3m	1.4m	1.5m	1.6m	1.7m	1.8m
	Load: kN/m ²	2.05	1.87	1.72	1.59	1.49	1.39	1.31	1.24	1.17
Fire properties	Reaction to fire: HPS200 Ultra: EN14782:06:5.1.2:C-S2,d0, LG: C-S3,d0 External fire performance: EN14782:06:5.1.2: Class Broof (t1), Class Broof (t2) Class Broof (t3) and Class Broof (t4)									
Curve options	Natural curve to 60m minimum radius. Crimp curve to 1m minimum radius									
Gauging	Straight sheets: 400mm, factory curved sheets: 400mm, site curved sheets: 405mm									
Fastener types	Primary: 140mm halter with 2No A2 stainless steel 5.5mm Ø fasteners. End distances 100mm-300mm (sheet end to halter centre line).									
Fastener frequency	Halters at every rib, every spacer/purlin. Side laps, mechanically seamed, no sealant Fixed point at one position within sheet length.									
Installation key requirements	Refer to ARKzip installation guidelines- datasheet 31 and 32 Halter brackets have 2No 304 grade stainless steel fasteners plus an isolating EPDM seal. Isolate aluminium from galvanised steel ARKzip requires a single fixed point per sheet, normally at the ridge or crown of a curved roof. Zip sheets as laid. Increase halter gauge by 5mm for natural curve sheets Note impact on AZ65/400 module Vs liner if rooflights to be installed Set zipping tool to 20mm rib top diameter Close ribs by hand pliers at each sheet end before zipping. Protect paint finishes with a rib cloth Walk on ARKzip ribs Use ARKzip ridge/ eaves and verge detailing and components. Allow 1.2xLmm, min 20mm gap at eaves stiffener angle. Turn sheets down at eaves at pitches < 10°									
Reference/ Standards	Structural performance – Oxford Brookes University assessment 2015. BS EN 1993.1.3.2006					BS EN 508-1:2000 BS EN 14782 BS EN 485 BS 5427:96				